

SEPARATELY EXCITED ELECTRONIC MOTOR SPEED CONTROLLER



CURTIS

MODEL 1266 SepEx®



FEATURES

- Power MOSFET technology provides smooth, silent, efficient, and cost-effective operation.
- Adjustable parameters enable custom optimization of speed, torque, and braking control.
- Half bridge armature and full bridge field provides regenerative braking down to near zero speed.
- Rugged package rated at IP5X.
- Overspeed braking (regenerative) limits speed while driving downhill.
- WalkAway™ braking feature limits any stopped or key-off rolling to very low speed. (Optional)
- System uses Hall effect speed sensor on motor or drive train to control vehicle speed.
- Tow switch enables free rolling for towing of vehicle.
- Anti-rollback function provides improved control when throttle is released on hills.
- Anti-stall function helps prevent motor commutator damage.
- Controller drives warning buzzer – steady in reverse; intermittent during WalkAway™ braking.
- MultiMode™ input provides for two speed and power modes of operation.
- Timed shutdown of main contactor after pedal is released and vehicle has stopped.
- LED status indicator.
- Fully compatible with 1311, 1314 and 1307 Programmers for parametric adjustment, tuning, test, and diagnostics.
- Extensive fault detection and diagnostic reporting using a Curtis Programmer including (partial list):
 - Main contactor weld check and driver check
 - Throttle and wiring faults
 - Open or shorted motor field winding
 - Open motor armature winding
 - Over-temperature
 - Missing or failed speed sensor
 - Armature drive failure.

DESCRIPTION

Curtis PMC Model 1266 SepEx® controllers are programmable and microprocessor based, with an advanced MOSFET power section for smooth and seamless control of separately excited motors.

APPLICATION

Curtis PMC 1266 SepEx® controllers are designed for use in two passenger golf/utility vehicles.

QUALITY COMPLIANCE

Manufactured under ISO 9001 certified Quality Management System. UL Recognized Component Status.

CURTIS INSTRUMENTS, INC.

200 KISCO AVENUE
MT. KISCO, NY 10549
USA
TEL (914) 666-2971
FAX (914) 666-2188

235 EAST AIRWAY BLVD.
LIVERMORE, CA 94551
USA
TEL (925) 961-1088
FAX (925) 961-1099

CURTIS INSTRUMENTS, (UK) LTD.

5 UPPER PRIORY STREET
NORTHAMPTON NN1 2PT
ENGLAND
TEL 44 (0) 1604-629755
FAX 44 (0) 1604-629876

CURTIS INSTRUMENTS INDIA PRIVATE LTD.

1199, GHOLE ROAD
PUNE 411004, INDIA
TEL 91 (0) 20-5531288
FAX 91 (0) 20-5539192

FEATURES continued

- Extensive system monitor capabilities using a Curtis Programmer, including (partial list):
 - Battery voltage
 - Throttle input
 - Direction and throttle switch operation
 - Motor field and armature currents
 - Controller heatsink temperature.

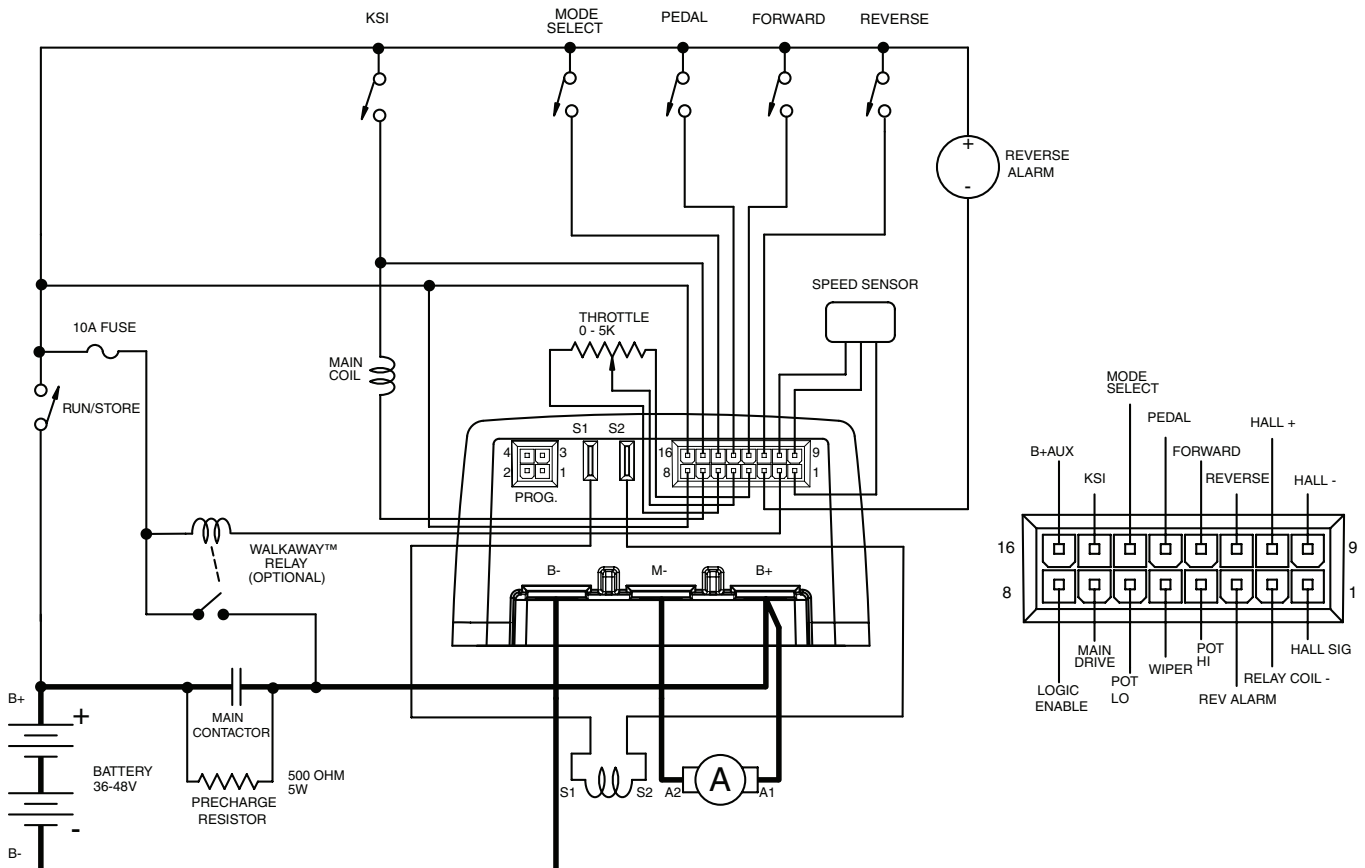
OPTIONS

- E/M brake.
- WalkAway™ braking feature to slow vehicle during key-off.
- 5K 3-wire, 0-5V, or ITS throttle.

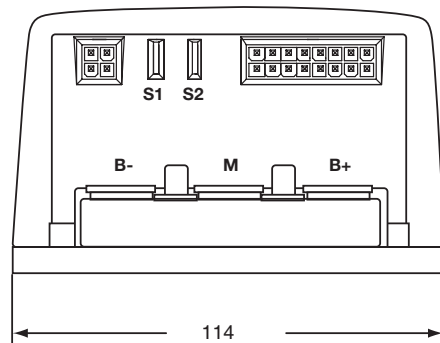
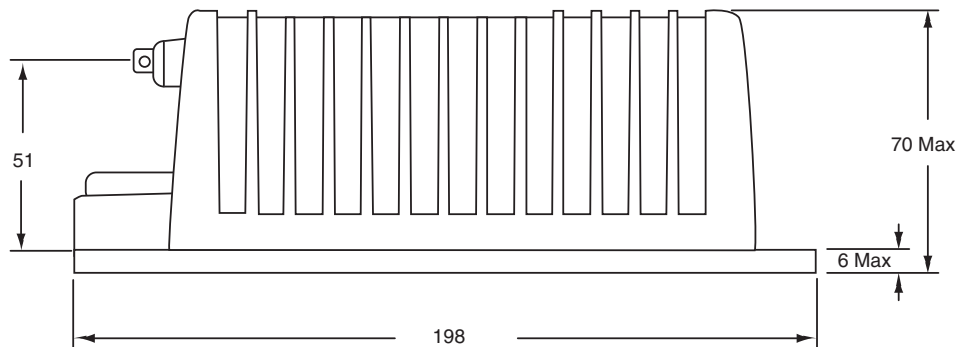
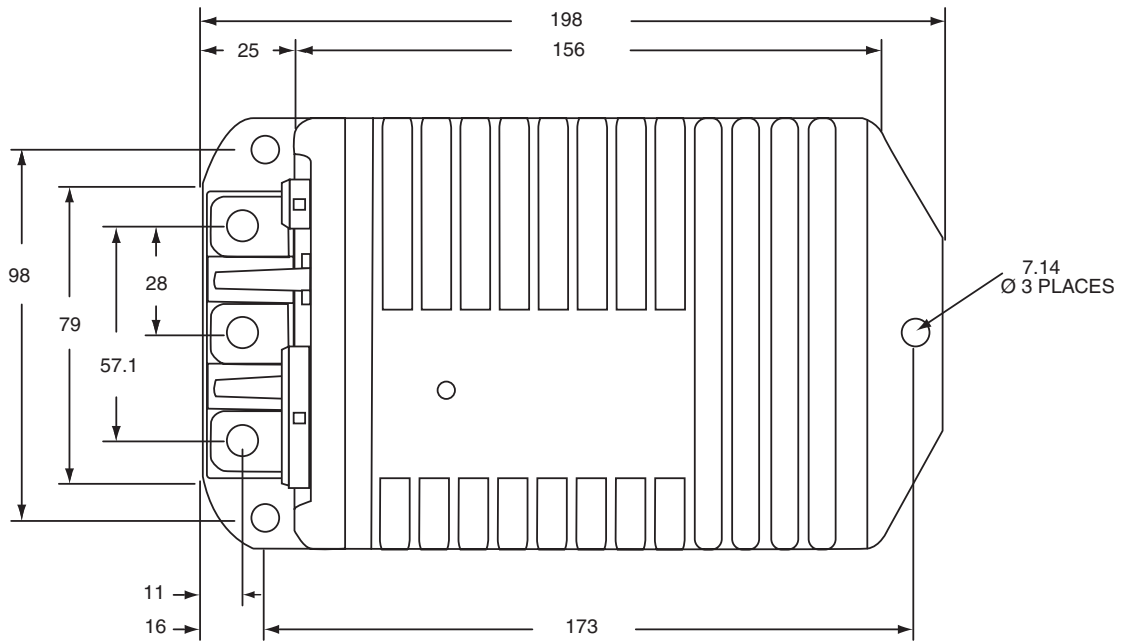
MODEL CHART

CURTIS PMC MODEL	VOLTAGE (volts)	ARMATURE RATING (amps) 2 minutes	FIELD RATING (amps) 2 minutes
1266 - 52XX	36-48	275	20

TYPICAL WIRING DIAGRAM



DIMENSIONS mm



WARRANTY Two year limited warranty from time of delivery.



is a trademark of Curtis Instruments, Inc.

CURTIS

Specifications subject to change without notice

©2006 Curtis Instruments, Inc.

50145 REVD 10/06